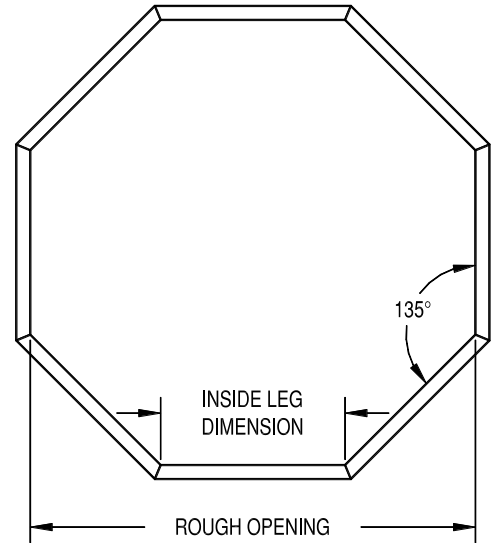
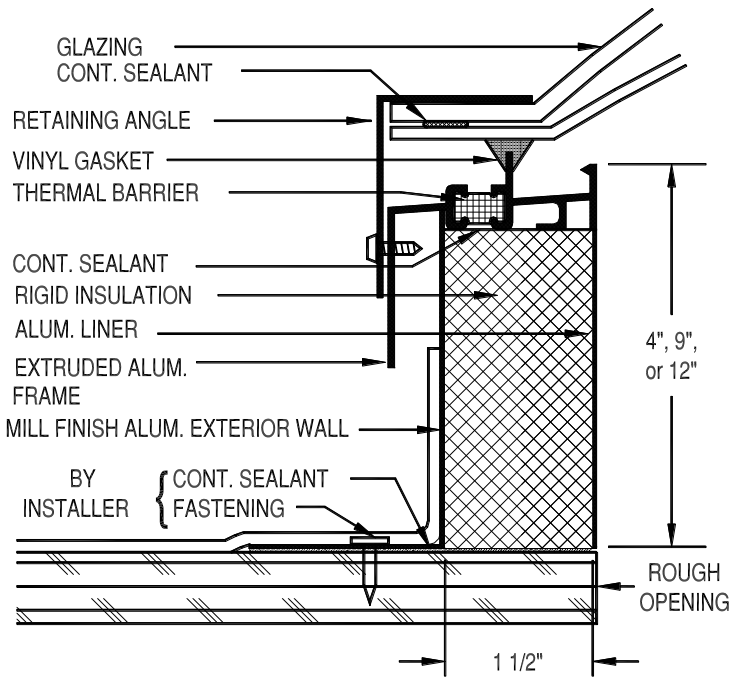
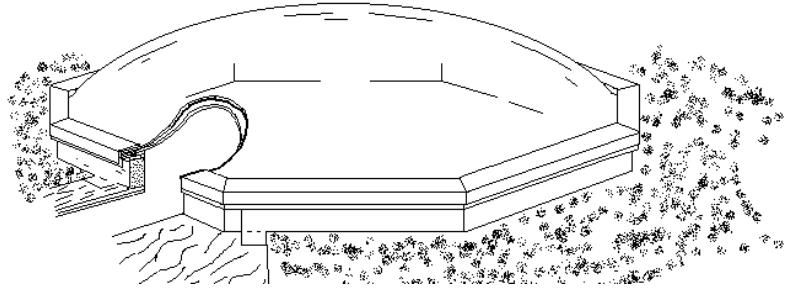




OCTAGON THERMALLY BROKEN DOME INSULATED CURB DOUBLE GLAZED

OC-TDICD

SCALE 6" = 1'



CIRCLE THE SIZE DESIRED.

MODEL OC-TDICD	ROUGH OPENING	LEG INSIDE LENGTH
28	22 1/2"	9 3/8"
52	46 1/2"	19 1/2"
76	69 3/4"	28 7/8"
98	92 3/4"	38 3/8"

CUSTOM SIZES

are available upon request.

SPECIFICATIONS

COMPLETE THE BLANKS BELOW WITH YOUR DESIRED SPECIFICATIONS.

Skylights shall be self-flashing as manufactured by SKYLINE SKY-LITES, 2925 Delta Drive, Colorado Springs, CO 80910, (866)625-1330. Skylights shall be model OC-TDICD glazed with thermally formed dual acrylic glazings [bronze / clear] _____ outer dome over a [clear / white] _____ inner dome. Self-flashing insulated curb frame shall be [4" / 9" / 12"] _____" tall fabricated from .040" mill finish aluminum exterior wall, 1 1/2" thick rigid insulation and an .025" aluminum interior wall to match frame finish. Mounting flange to be 2" wide. Skylight frame shall be of 6063-T5 aluminum with a .070" thick base frame, incorporating a poured in place polyurethane thermal barrier, and a .062" thick retaining angle. Frame finish shall be [bronze anodized / clear anodized / natural aluminum (mill)] _____. All corners shall be welded. Vinyl gasket shall be used between the frame and the glazing to form a tight seal. Weep holes shall be provided in the frame. A continuous silicone sealant shall be used between glazings. Skylight shall be completely assembled by the manufacturer and ready for installation directly to sheathing by others.

I hereby certify that all quantities, dimensions and conditions shown on this drawing are correct as shown or as corrected.

SIGNATURE DATE
REPRESENTING _____

PROJECT: _____
CUSTOMER: _____
CONTRACTOR: _____
QUAN/MODEL: _____